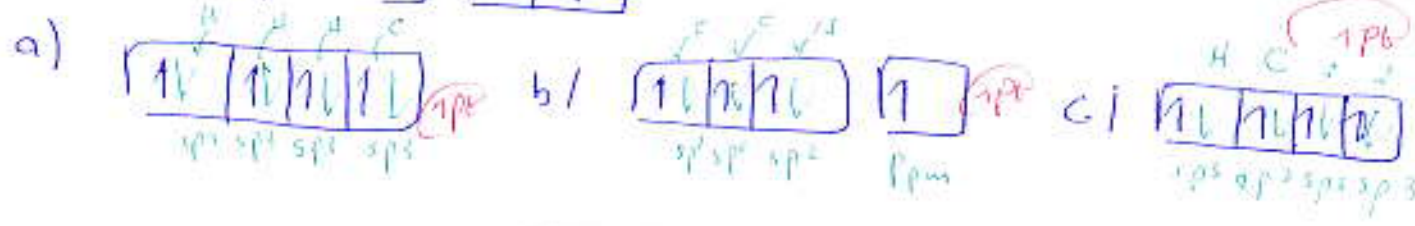
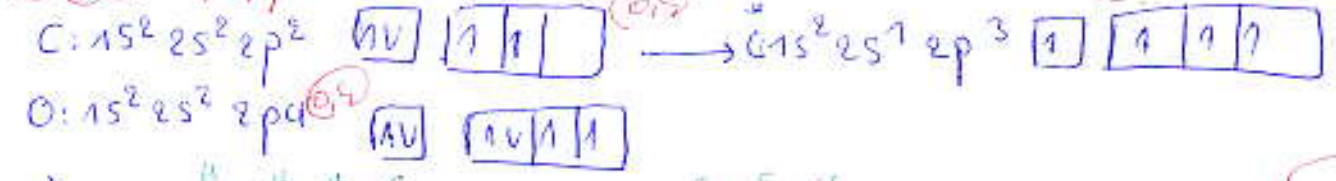


EX:01 (7/7)

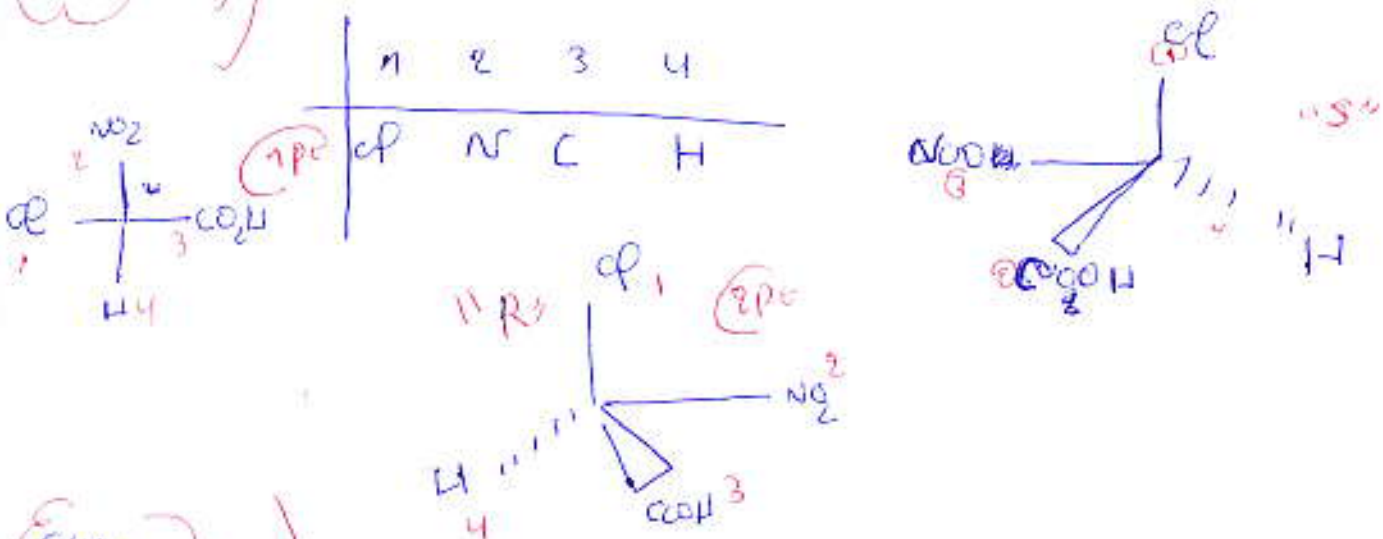
- 1) 3-hydroxybutan-2-one (9,75pt)      2) 2-amino propanoate d'ethyl (2pt)
- 3) 2,2,3-dichlorobut-2-ène (2,25pt)

EX:02 (7/7)

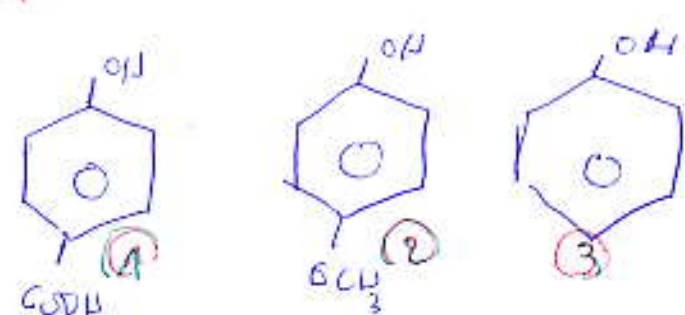


Le schéma d'hybridation (2,5pt)

EX:03 (3/3)



EX:04 (3/3)



1) > 2) > 3) (2pt)

- 1) attracteurs → augmente l'acidité
- 2) donneurs ↓ diminue " (1pt)
- 3) pas d'effet